

Douglas

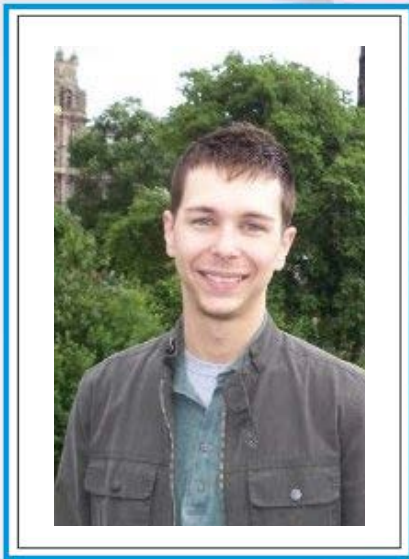
INSTITUT
UNIVERSITAIRE EN
SANTÉ MENTALE

MENTAL HEALTH
UNIVERSITY
INSTITUTE



NEUROSCIENCE FOR MENTAL HEALTH SEMINARS

“Regulation of stress and emotional behavior by corticolimbic endocannabinoid signaling”



Ryan J. McLaughlin, PhD

Postdoctoral Fellow (Dr. Walker's lab)

Dept of Psychiatry and Integrated Program in Neuroscience
Douglas Mental Health University Institute

Lundi le 12 mai 2014, 11:00
Salle Bowerman,
Institut Douglas

Monday, May 12, 2014, 11:00
Bowerman Room,
Douglas Institute

Un café sera servi avant le séminaire / Coffee will be served prior to the seminar

Merci à nos partenaires / Thanks to our sponsors:

 RÉSEAU QUÉBÉCOIS
DE RECHERCHE SUR LE SUICIDE

 SUNOVION

 Lilly

Centre de recherche de l'Hôpital Douglas

6875 boulevard LaSalle, Montréal
(Québec) H4H 1R3

514.761.6131

www.douglas.qc.ca